

Flower Spotting

How to play. Walk or drive around slowly while the children try to identify the flowers

Weeping Cherry (Prunus Pendula)

Tree



Flower



Leaf



Bark



Also comes in pink.

Myrobalan plum (Prunus Carasifera)

Tree



Flower



Leaf



Bark



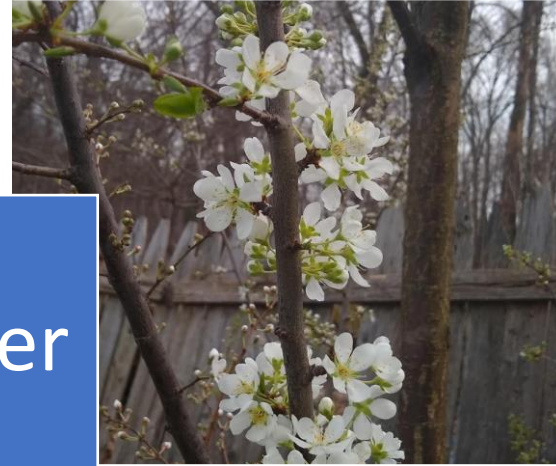
Native to Europe, purple flowers and leaves are selected for street trees. Some years you will find dark tasty plums on neighborhood streets.

Japanese Plum (*Prunus salicina*)

Tree



Flower



Leaf



Bark



Most store plum from these trees

Asian Pear (*Pyrus pyrifolia*)

Tree



Flower



Leaf



Bark



Asian pears sometimes look like apples, less sweet and sometime crunchy

Azalea and *Rhododendron* (*Rhododendron* sp.)

Bush



Flower



Flower



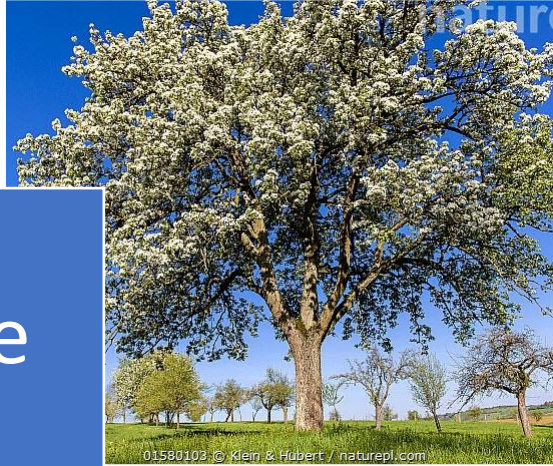
Flower



Azaleas are just two species of Rhododendrons but they have oh so many colors.

European pear(*Pyrus communis*)

Tree



Flower



Leaf



Bark



Most Grocery store pears are European pears.

Forsythia (Forsythia Supena)

Bush



Flower



Leaf



Bark



Sometimes called the Easter Tree

Callery pear (*Pyrus calleryana*)

Tree



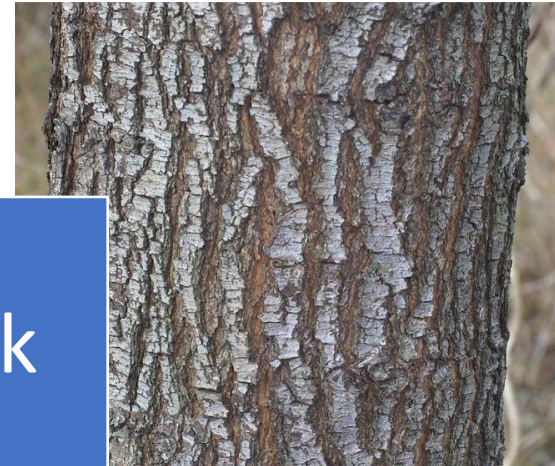
Flower



Leaf



Bark



Yes it is a pear but the fruit is small and bitter. Invasive but very preaty. We should stop planting them.

Apple (Malus Domestica)

Tree



Flower



Leaf



Bark



Apple flowers are sometimes pink but usually turn white when they fully open. Apple Leaves have bigger teeth like a stake knife on there edges. A crab apple is any apple with fruit smaller than 2" around

Peach and Nectarine (Prunus persica)

Tree



Flower



Leaf



Bark



Nectarines are hairless peaches not a different fruit or hybrid. Peach Leaves are longer than plums and cherries. Young tree bark looks like cherries but changes as they get older.

Almond (Prunus Dulcis)

Tree



Flower



Leaf



Bark



Close family to Peaches. Almond do grow edible fruits that are used like vegetables. We mostly eat the seed.

Sakura (Prunus Serrulata)

Tree



Flower



Leaf



Bark



This is flower gives the Cherry blossom festival its name, Sakura Matsuri. The most popular is the Yoshino , flowers start white and turn pink, but the flowers come in dozens of shades and colors

Dogwood (Cornus florida)

Tree



Flower



Leaf



Bark



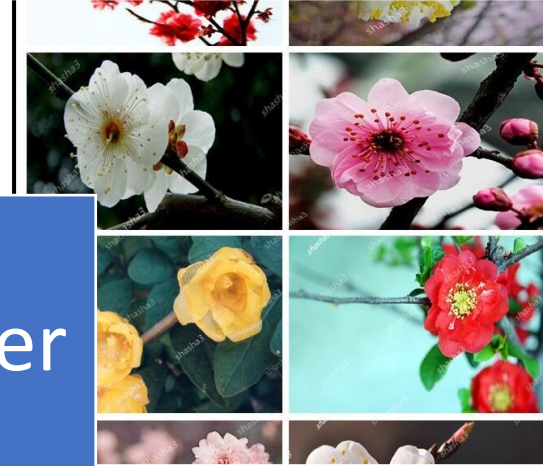
Dogwood leaves and brackets look like dog ears. The “flowers” are the little yellow spots in the middle. The color part is actually a leaf bracket. Pink and Red brackets are rare, so we clone them. After Japan gave the US 10,000 Cherry trees we give Japan 10,000 dogwoods.

Japanese Plum (Prunus Mume)

Tree



Flower



Leaf



Bark



One of the “Cherry Blossom” trees. Its actually its an Apricot the fruits rarely ripen, since they are all picked green and made into pickles and wine.

Apricot (Prunus Armenica)

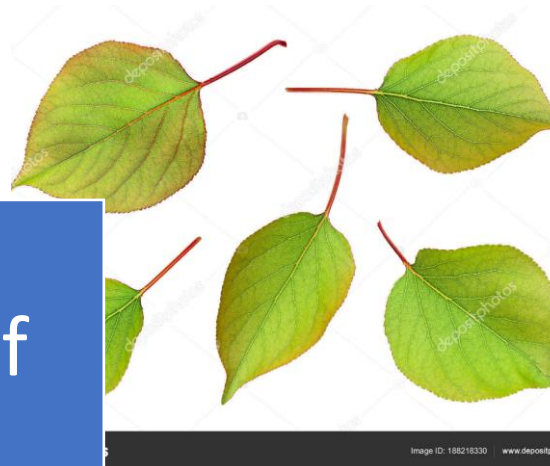
Tree



Flower



Leaf



Bark



Apricots are related to Peaches, but their closest family are Plums. Some Apricot seed are good to eat. Amaretto is often made with Apricot seeds

Magnolia (Magnolia .sp)

Tree



Flower



Leaf



Bark



Magnolia like beetles for pollination more than bees.

Sweet Cherry (Prunus Avium)

Tree



Flower



Leaf



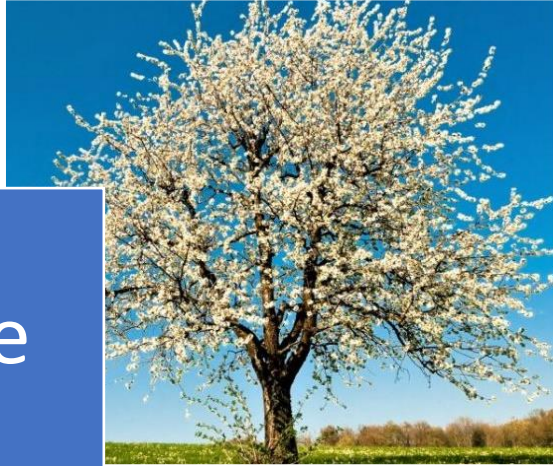
Bark



Cherries have two red bumps on the stem of the leaf. Be careful when planting sweet cherry seeds. Trees grow to be up to 105ft tall. Sweet cherries are for the birds (Avium)

Pie Cherry (*Prunus Cerasus*)

Tree



Flower



Leaf



Bark



You likely won't be able to tell a sweet cherry from a pie cherry aka Sour cherry till you taste the fruit.

